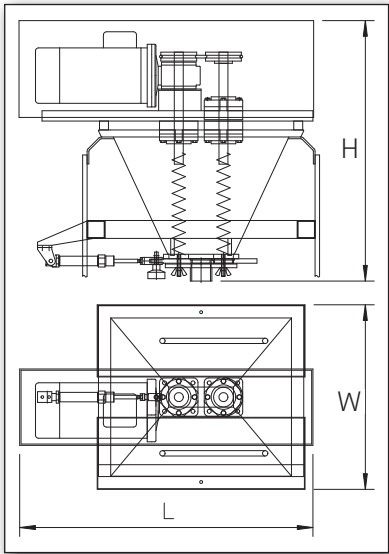


Spice dosing unit - volumetric

CABINPLANT PRODUCT SHEET

Cabinplant volumetric spice dosing unit is designed for dosing dry spices. Dosing is performed by a sliding piston opening up to a chamber the size of which controls the volume/weight to be dosed. The chamber is placed below a small hopper.

The chamber can be exchanged to achieve different spice volumes. The volumetric spice dosing unit can be incorporated in all kinds of filling lines such as can, tray or glass jar filling or thermoforming lines.



Capacity,	per piston	dosing/min.	30-120
Width (W),	approx.	mm	650
Length (L),	approx.	mm	600-1400
Height, doser,	approx.	mm	600-800
Portion size		gram	0.2 to 5



Application

- Salt
- Oregano, herbs, red dry chili, pepper, etc.

Functionality

- Option: agitation inside the tank
- Option: the tank can be equipped with one electrical heating element in order to keep the product dry
- Exchangeable size parts for changing quantity
- Dosing for up to 6 lanes

Advantages

- Easily changeable formats
- Easy to clean
- Accurate dosing
- Uniform filling

Cabinplant A/S
Roesbjergvej 9
DK-5683 Haarby
Denmark

Tel.: +45 6373 2020
Fax: +45 6373 2000
E-mail: cpi@cabinplant.com

www.cabinplant.com

Cabinplant
Precise by nature